



NEW
GRL
JIB CRANE
360°
CONTINUOUS REVOLUTION

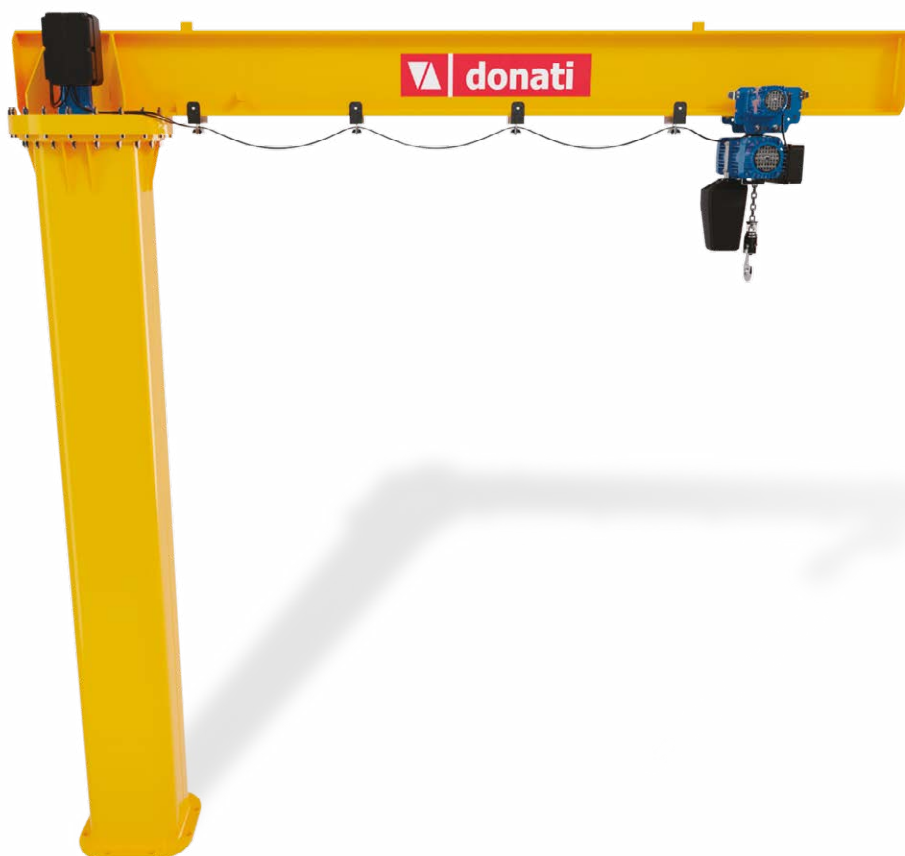


 **donati**
CLEVER CONVENIENCE



NEW GRL THE JIB CRANE THAT CAN BE CONVERTED FROM MANUAL TO ELECTRIC

Ideal for providing a 360° load handling service.
Perfect for indoor or outdoor applications, loading lorries,
serving machines or assembling equipment.






It is designed to fit a slip ring collector inside the column to enable continuous rotation.



The use of a thrust bearing with internal gearing ensures smoother rotation and a higher level of safety.



GRL CRANE USEFUL AT 360°

The new Donati GRL Jib Crane is able to make a **360° continuous rotation** with a **maximum capacity of 2,000 kg** and an **outreach up to 7 metres**

It can be converted from Manual to Electric, even after it has been purchased, with an adapter kit available on request.



kg

MAX. CAPACITY

2000 kg

ROTATION



360°



OUTREACH UP TO



7 m

The GRL is Donati Sollevamenti's innovative response to the demands of a highly specific and challenging market that requires lightness and versatility in a single product.

MAIN CHARACTERISTICS

COLUMN

Made in press forged steel with a tubular structure for high stability.

MOTOREDUCER

Highly reliable, it consists of an epicyclical reducer in an oil bath combined with a self-braking conical motor. Attached vertically in the upper part of the outreach, progressive starting up and braking are ensured by a frequency inverter powered by three-phase 380-480 V voltage.

ROTATING ARM

Allows maximum use of the hook run of the hoist/trolley installed.

ROTATION MECHANISM

The bearing ring or thrust bearing supports both the vertical forces and the tilting momentum due to movement.

FIXING SYSTEM

With two options: foundation with anchor bolts or counter plate with chemical anchor bolts.

ELECTRICAL POWER SUPPLY

The power line to power the trolley-hoist is formed by flexible flat fire-retardant multipolar cables festooned on sliding trolleys on the lower flange of the beam.

PRODUCT RANGE

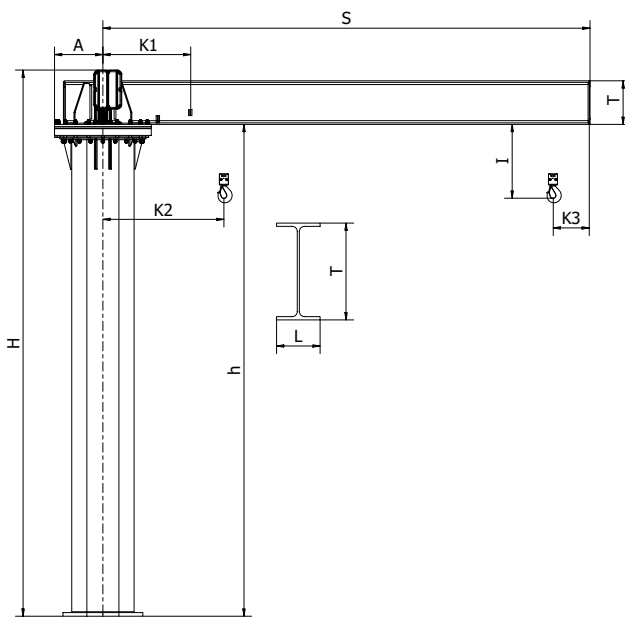
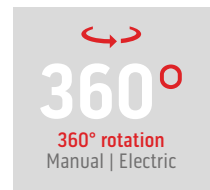
CAPACITY: 250, 500, 1000 and 2000 kg

OUTREACH: up to 7 m



TECHNICAL DATA SHEETS

GRL series Column-Mounted Manual | Electric Jib Crane 360° continuous rotation

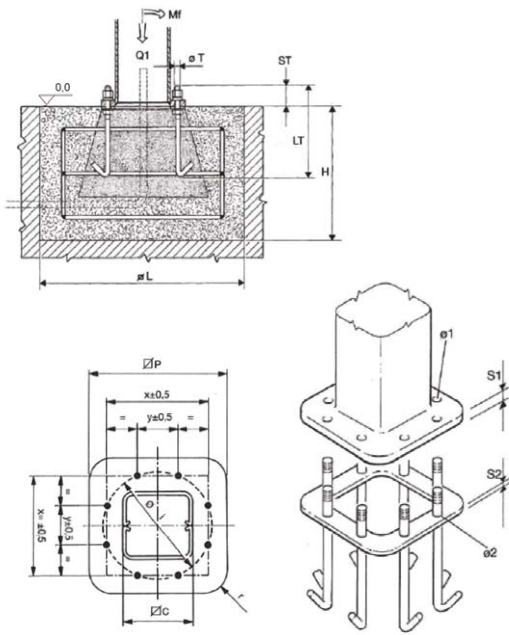


GRL Jib Crane with DMK electric chain hoist
 $K2 = K1 + (M/2)$ → referring to the fixed mechanical limit switch
 $K3 = (M/2)$ → referring to the fixed mechanical limit switch
 I and M = See DMK commercial catalogue

For the limits of use, please refer to the general Jib Crane Catalogue

Lifting capacity	Outreach	Jib Crane size	Counterplate	Code	Under beam		Total height H		Overall dimensions (mm)				Arm speed		Motor power	Jib Crane weight	Column weight
					h minimum	h maximum	Electric	Manual	K1	A	T	L	rpm	Peripheral			
kg	m				mm	mm			mm	mm	mm	mm	r/min	m/min	kW	kg	kg/m
250	4	U	U	E30544	2810	4810	3260	3100	676	318	240	120	0.75	18	0.4	480	43.5
	5	U	U	E30554	2810	4810	3260	3100	676	318	240	120	0.6	19	0.4	510	43.5
	6	U	U	E30564	2810	4810	3260	3100	676	318	300	150	0.5	20	0.4	620	43.5
	7	V	V	E30674	3060	5060	3510	3465	758	400	360	170	0.5	22	0.4	960	64
500	2	U	U	E30525	2810	4810	3260	3100	676	318	240	120	1	13	0.4	415	43.5
	3	U	U	E30535	2810	4810	3260	3100	676	318	240	120	1	19	0.4	450	43.5
	4	U	U	E30545	2810	4810	3260	3160	676	318	300	150	0.75	18	0.4	540	43.5
	5	U	U	E30555	2810	4810	3260	3160	676	318	300	150	0.6	19	0.4	580	43.5
	6	V	V	E30665	3060	5060	3510	3465	758	400	360	170	0.5	20	0.4	910	64
	7	Z	Z1	E30775	3060	5060	3510	3505	758	400	400	180	0.5	22	0.4	1080	75.2
	1000	2	U	U	E30527	2810	4810	3260	3100	676	318	300	150	1	13	0.4	450
3	U	U	E30537	2810	4810	3260	3100	676	318	300	150	1	19	0.4	490	43.5	
4	V	V	E30647	3060	5060	3510	3465	758	400	360	170	0.7	18	0.4	800	64	
5	Z	Z1	E30757	3060	5060	3510	3465	758	400	360	170	0.6	20	0.4	900	75.2	
6	Z	Z1	E30767	3060	5060	3510	3465	758	400	400	180	0.5	20	0.4	1010	75.2	
7	Z	Z1	E30777	3060	5060	3510	3465	758	400	450	190	0.5	22	0.4	1170	75.2	
2000	2	V	V	E30629	3060	5060	3510	3465	758	400	360	170	1	13	0.4	680	64
	3	Z	Z1	E30739	3060	5060	3510	3465	758	400	360	170	1	19	0.4	770	75.2
	4	Z	Z2	E30749	3060	5060	3510	3505	758	400	400	180	0.7	18	0.4	870	75.2
	5	Z	Z2	E30759	3060	5060	3555	3555	758	400	450	190	0.5	16	0.4	1100	75.2

Base Plates, Foundation Frames and Plinths for GRL Jib Cranes



ATTENTION!

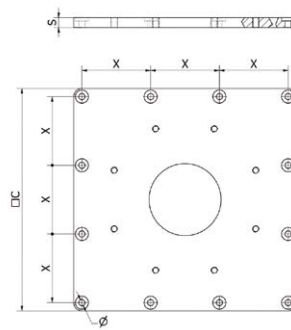
The dimensions of the foundation plinths are purely indicative. The foundation plinth must be dimensioned by expert, qualified technicians considering the real consistency of the ground and the maximum pressure it can withstand.

Size		U	V	Z
Base plate and foundation frame (mm)	Ø C	372	435	515
	Ø P	475	555	660
	S1	20	20	25
	S2	8	8	8
	x	432	506	599
	y	179	210	248
	Ø	468	548	248
	r	145	165	197
	Ø1	25	29	35
Anchor bolts (mm)	ØT	M20	M24	M30
	LT	550	600	700
	ST	55	60	75
Tightening torque (Nm)		200	350	680
Frame/anchor bolt weight (kg)		17	26	47
Foundation plinth (mm)	Ø L	1700	2000	2400
	H	900	1100	1100
Reaction (kN)	Q1*	18.4	28.7	29.35
Momentum (kNm)	Mf*	57	107	164

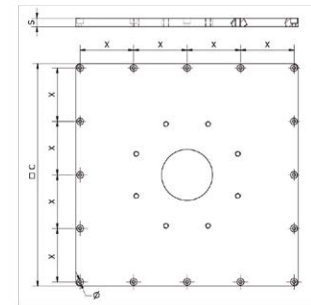
Note: the foundation frame with anchor bolts, used in the column-mounted version for fixing the column itself to the foundation plinth is supplied on request.

* M = 1,11; $\psi = 1,15$

Counterplates for fixing to the floor with chemical bolts of the GRL Jib Crane



Nr 12 Chemical bolts for COUNTERPLATE U - V - Z1



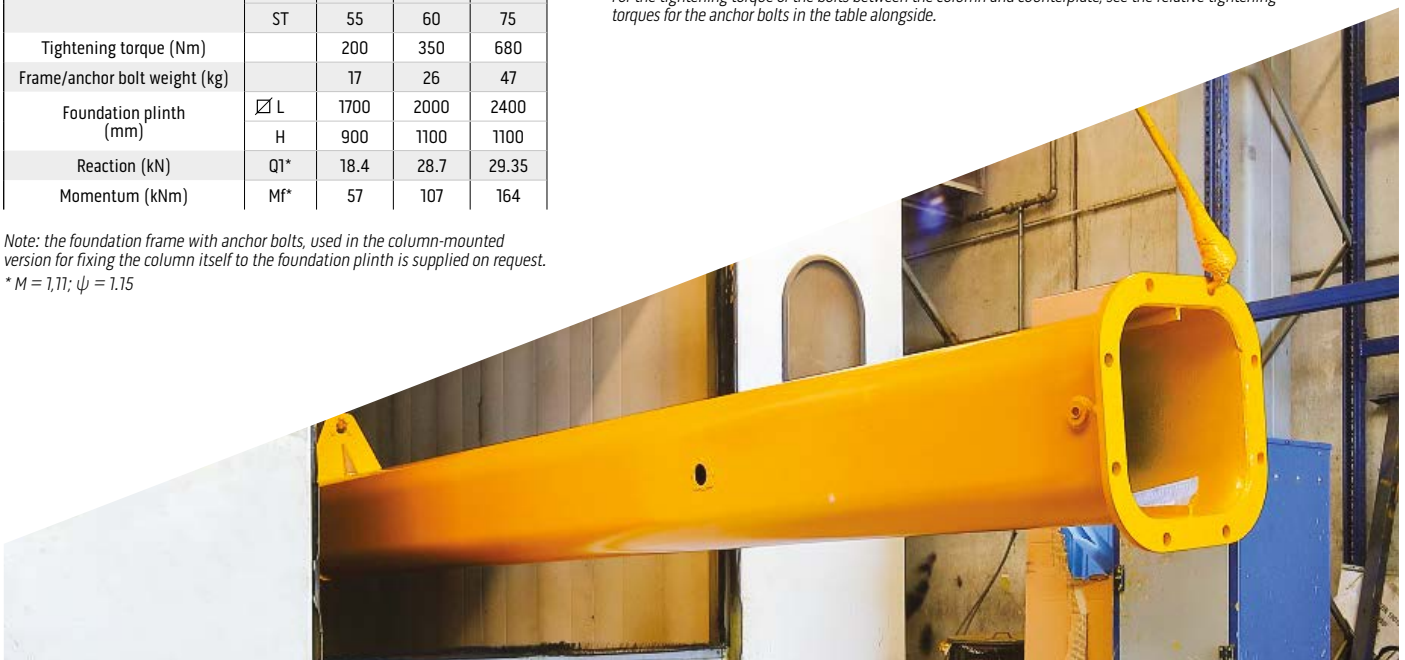
Nr 16 Chemical bolts for COUNTERPLATE Z2

ATTENTION!

Fixing of column with chemical bolts requires a scrupulous verification of suitability in relation to type of support flooring. The suitability checks are the responsibility of the user and must be carried out by an expert, qualified technicians who will evaluate the feasibility and formally assume the relative responsibilities.

Size		U	V	Z1	Z2
Counterplate and chemical bolts code		GBA2U0KPS	GBA2V0KPS	GBA2Z1KPS	GBA2Z2KPS
Counterplate dimensions (mm)	C	680	995	1130	1310
	S	30	40	40	50
	x	210	315	360	315
	Nr x Ø	12x19	12x19	12x19	16x19
Counterplate weight (kg)		100	285	375	640
Maximum tilting momentum allowed (kNm)	Mf*	56.7	107.3	135.6	164
Fixing characteristics	Type of concrete floor: minimum Fck/Rck class (N/mm ²)	C20/25	C20/25	C20/25	C20/25
	Minimum concrete floor thickness (mm)	170	170	170	170
	Diameter of hole in the floor (mm)	18	18	18	18
	Depth of hole in concrete floor (mm)	135	135	135	135
	Tightening torque of the bolts (Nm)	60	60	60	60
	Bolt height from top plate surface (mm)	35	25	25	15

For the tightening torque of the bolts between the column and counterplate, see the relative tightening torques for the anchor bolts in the table alongside.





Donati Sollevamenti S.r.l.
Via S. Quasimodo, 17 - 20025 Legnano (MI) - Italy
Tel +39 0331 14811 - Fax +39 0331 1481880

dvo.info@donaticranes.com
www.donaticranes.com

