



LIFTING PRODUCTIVITY SINCE 1930

PRODUCT RANGE



DONATI

Lifting productivity since 1930

Donati Sollevamenti S.r.l. was founded in Italy in 1930 and has since then earned a leading position on the international market for lifting and handling equipment, with exports accounting for around two thirds of its total turnover.

The advanced design and construction features of all Donati products, are the basis for the competitiveness and reliability of the entire range, which is suitable for all industries.

Donati designs and manufactures its products in Italy, its marketing mix is known for its vast range (standard and special solutions), excellent quality/price ratio, fast response and delivery; it is the ideal partner for overhead travelling crane manufacturers, material handling integrators and distributors as well as service companies specialized in retrofitting/refurbishing. Donati is known in the market for its constant focus on customer satisfaction, its in-house

priorities are the quality of processes, health and safety as well as environment protection (Donati is ISO 9001 - ISO 14001 - OHSAS 18001 certified).

Donati also complies with the provisions of the Italian Legislative Decree 231/01 concerning the administrative responsibility of legal entities and companies (governing Compliance, and also Safety and Environmental issues).



IMPROVED PRODUCTIVITY

Electric chain hoists

DMK electric hoists are made with one or two chain falls, in fixed, normal or low headroom execution, with capacities from 125 to 4,000 kg and lifting speeds from 1.2 to 16 m/min.

They can be equipped with hand-push and electric trolley with travel speeds from 7 to 22 m/min.

The hoists are equipped with a clutch device in the single chain fall version with maximum capacity of 2,000 kg.

For higher capacities up to 4,000 kg there are two chain falls, the hoists are supplied completely with an electromechanical overload device and electric raise/lower limit switches.

The DMK series electric chain hoists are supplied with conical self-braking motors.

Hoists up to 2,000 kg capacity are also available in climbing version or with horizontal chain output.





FOR EXTREME LOADS

Electric wire rope hoists

The DRH range comes in 4 basic sizes with capacities from 800 to 50,000 kg and lifting speeds from 0.7 to 12 m/min; lifting speeds from 0.4 to 14 m/min can be obtained with the application of frequency inverters.

The complete range of single girder and double girder trolleys can be used for integrated applications on all types of lifting systems.

The DRH series electric wire rope hoists and electric trolleys are produced with modular components, this allows multiple executions, including as follows:

- True vertical lift
- Outputs opposite ropes from the drum
- Horizontal rope output
- Rope output towards the top
- Single girder trolleys in normal, low headroom and articulated version
- Double girder trolleys with hoist on top of trolley, suspended or perpendicular to the cranes' beams.

The DRH series electric wire rope hoists are supplied with conical self-braking motors, ventilated and complete with thermal probes.

For high capacities cylindrical motors are available.



FAST, SAFE AND RELIABLE

JIB CRANES GBA-GBP series with manual rotation

Donati jib cranes are an economical and practical option, ideal for internal transportation of materials, it can become a full operating machine in production centres.

Manufactured in two basic constructions, column or wall-mounted, it is available with three different types of arms:

- C VERSION: Crane with a channel profile arm complete with load trolley.
- T VERSION: Crane with under braced I – beam arm.
- H VERSION: Crane with overbraced I – beam arm.

Capacities range from 125 to 2,000 kg with arms length from 2 to 8 m.



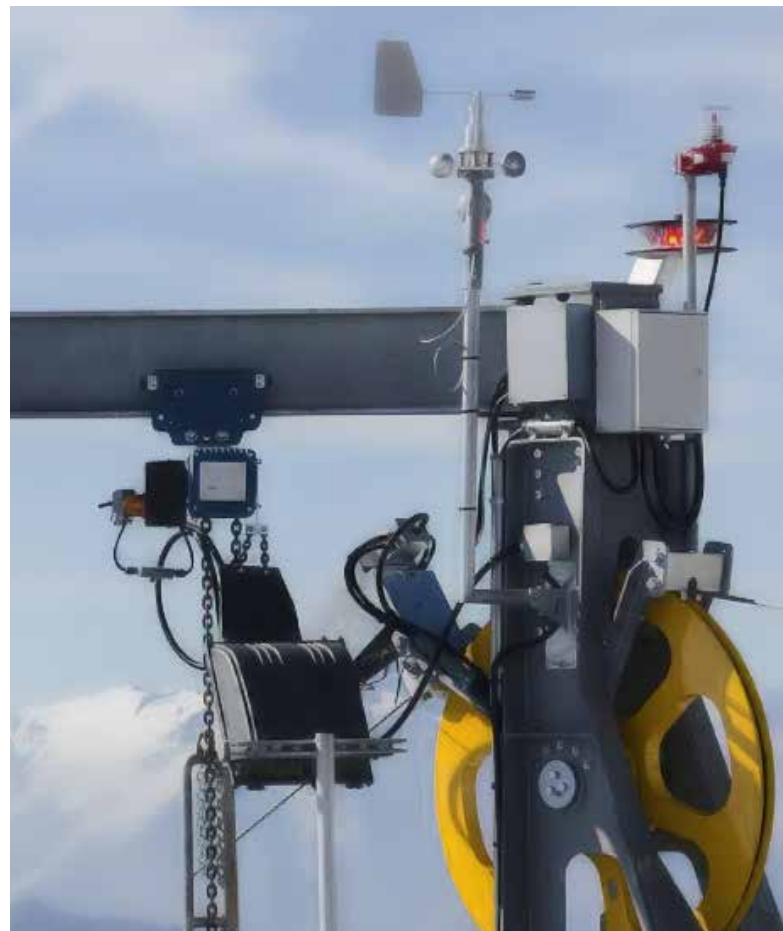
JIB CRANES CBE-MBE series with motorised arm

An electrically rotated jib crane in light version, based on the GBA-GBP series, it is suitable for a more intensive duty work since all movements are motorised.

Created in a construction similar to the manual series, it is available with two different arm types:

- T VERSION: Crane with under braced I – beam arm.
- H VERSION: Crane with over braced I – beam arm.

Capacities range from 500 to 2,000 kg with arms length from 2 to 8 m.



BROAD SPECTRUM OF LOAD CAPACITIES

JIB CRANES WITH ARTICULATED ARMS CBB-MBB SERIES

Designed to solve special handling needs in "difficult" areas, in wall and column versions with capacities from 125 to 500 kg and arms in two parts with lengths from 3 to 7 m.

The execution with 2 articulated arms makes it possible to obtain a rotation angle of approximately 360°. In this version the hoist is in fixed execution at the end of the second arm.



JIB CRANES WITH 360° ELECTRIC ROTATION GBR SERIES

The highest performing jib crane of the Donati range. It uses standardized components and permits multiple configurations.

Total rotation 360°, important structural dimensions and capacity up to 10,000 kg means it can be used for heavy duty loads.

It is built with a free-standing octagonal column and arm with I-beam or box beam, with lengths from 4 to 10.5 m. Its excellent solidity ensures correct operation in any environmental conditions.



THE GBL SERIES WITH 360° ELECTRICALLY OR MANUALLY ROTATED JIB CRANES

Are the ideal solution for handling loads in internal environments.

Available as standard for lifting loads from 1,000 to 5,000 kg and jibs from 4 to 8 m with electrical rotation and up to 2,000 kg with manual rotation.





LIGHT HANDLING SYSTEM

Channel profile DSC series

Donati channel profiles are suitable for the realization of monorails and suspended cranes with capacities from 125 to 1,000 kg with hand-push travel.

Donati channel profiles are suitable for being suspended from the lower flange of the supporting beams, and act as the base of the modular handling system which is simple to install and fast to assemble: installation, modification or relocation operations only require fastening standard modules with bolts, and do not require welding.

Donati channel profiles are available in 3 types: small "P", large "G" and reinforced "GR". The choice of profile type is based on the capacity and distance between suspensions.

The electrical feed are realised with flat cable suspended on slides or trolleys running inside the channel profiles.

The systems are supplied with all parts required for installation: connection bolts, end stops, suspensions and manual trolleys for hoist and crane.



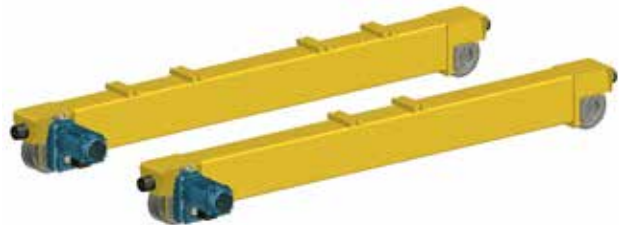
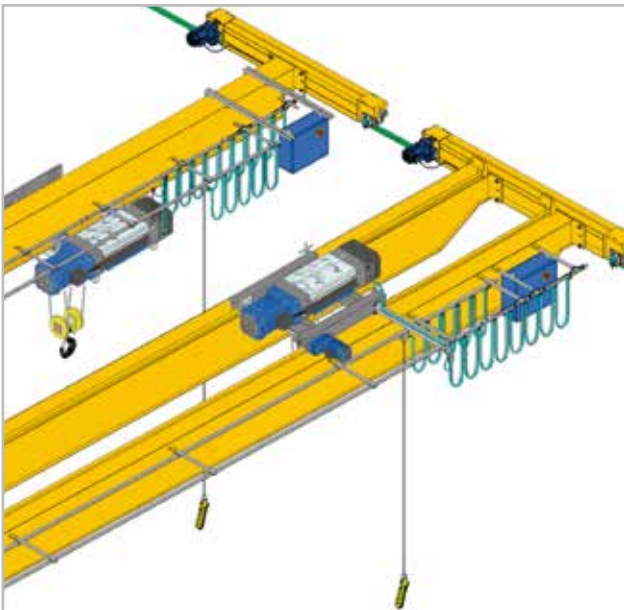
CRANE SET

CRANE KITS

End carriages for bridge cranes are built in tubular profile, they are equipped with DGT series wheel units and DGP series geared motors. Travel speeds range from 3.2 to 80 m/min. The end carriages permit different types of assemblies for the crane beams: lateral connection, on top connection,

or lateral + on top.

End carriage wheelbases for single girder bridge cranes ranges from 1.8 to 3.6 m based on the crane span, end carriage wheelbases for double girder bridge cranes ranges from 2.4 to 3.9 m based on the crane span.



WHEEL UNITS AND GEARED MOTORS FOR BRIDGE CRANES

The DGT series wheel units are built in 6 sizes. The wheels can be supplied with the following diameters: 125 - 160 - 200 - 250 - 315 - 400 mm and are suitable to run on square or flat rolled sections, Burbuck or Vignole rails.

The DGP series geared motors built in 4 sizes are designed to drive the wheel units, the connection between wheel and geared motor is by shaft and permits alternative applications.





- ▶ Company
- ▶ Products
- ▶ Documentation
- ▶ Safety Policy
- ▶ Code of ethics
- ▶ Privacy

MANUAL AND ELECTRIC JIB CRANES

Made in Italy designed for the world



DONATI SOLLEVAMENTI SRL



Contacts in Italy ▶



Contacts export ▶



Donati Shop ▶



Brochures & User Guides

- ▶ Electric chain hoist
- ▶ electric wire rope hoist
- ▶ Jjib cranes
- ▶ Drive unit for cranes
- ▶ Endcarriages for bridge cranes
- ▶ Channel Profile

Documentation

PHOTO GALLERY



Applications

▶ Open gallery

DONATI NEWS

- ▶ Il nuovo sito è Online!
- ▶ The new website is coming
- ▶ A new logo for Donati
- ▶ Donati aderisce al Consorzio Qualità
- ▶ Award EXPORT to Donati Sollevamenti

LIFTING PRODUCTIVITY SINCE 1930



Download the institutional Donati brochure

▶ Institutional Donati brochure

PERFECTLY UP-TO-DATE

ARIANNA: THE SOFTWARE THAT GUIDES MANUFACTURERS IN THEIR SELECTION OF COMPONENTS TO DESIGN BRIDGE CRANES.

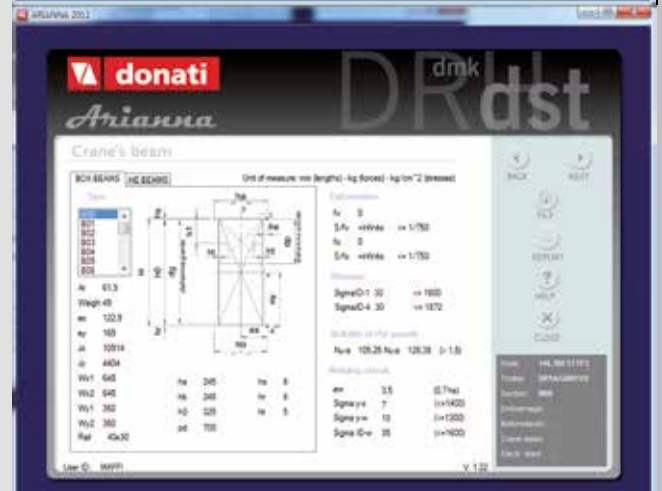
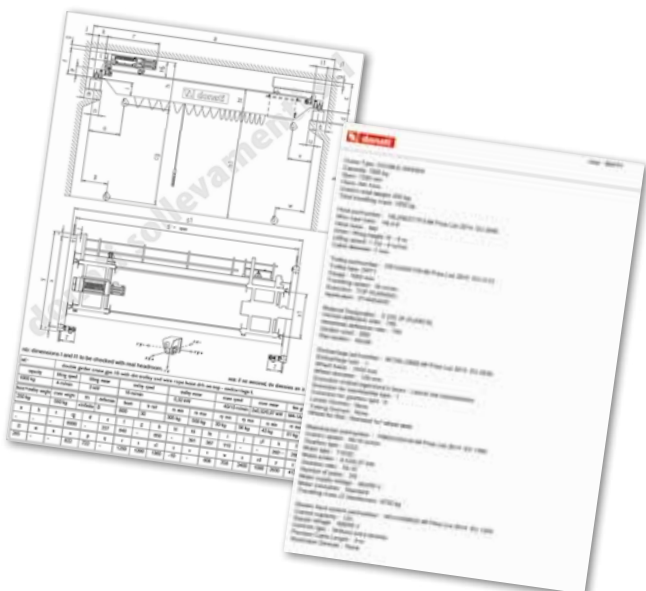
MAIN FEATURES OF THE CRANE DESIGNER SOFTWARE

Guided selection of the Appropriate Donati products for manufacturing bridge cranes, based on the structural and mechanical requirements of the intended use and environment, by entering the following inputs:

- 1) Capacity – SPAN – FEM class and configuration (Single Girder – Double Girder)
- 2) Selection of hoist type
- 3) Selection of trolley type
- 4) Type of Beam material, desired deflection (from 1/600 to 1/1000)
- 5) Selection of the Electrical Control System.

Following outputs are therefore obtained:

- Beam type (Box Beam or HE Beam) with relative dimensions and static specifications
- Endcarriage type and Gear Motor type based on speed
- Layout diagram of the installation
- List of data and codes with relative prices
- Possibility of creating a quotation directly in a word format.
- Possibility of printing the crane layout.







Donati Sollevamenti S.r.l.

Via Quasimodo, 17
20025 Legnano (MI) – Italy
T +39 0331 14811
F +39 0331 1481880
E dvo.info@donaticranes.com

KMAN02DG00

Factory:

Via Archimede, 52
20864 Agrate Brianza (MB) – Italy

www.donaticranes.com

